



# **Brief Overview: Segregated Schooling and Opportunities to Learn in New Jersey**

**CNJG Education Funders**

**May 23, 2024**

## THE TAKEAWAY:

Leaving students in segregated school environments means leaving them in schools more likely characterized by weak, if not harsh, social bonds, limited learning opportunities, especially for high-level learning, and fewer human resources.

## SCHOOL SEGREGATION CATEGORIES



**Mixed Enrollment** schools where the White population is between 10% and 90% and percent economically disadvantaged is less than 50% (n=1,527).



**White Isolated** schools where 90% or more of students are white (n=64).



**Economically Segregated** schools serving a mix of racial groups but 50% or more low-income students (n=298).



**Racially Segregated** schools, with at least 90% minority students (n=44).



**Racially and Economically Segregated** schools also serve at least 90% minority students and have at least 50% economically disadvantaged students (n=407).

## Percentage Low-income by School Segregation - All Traditional Schools, 2015-2020

School Type		2015-2016	2016-2017	2017-2018	2018-2019	2019-2020
Mixed/Non-segregated	<b>% Econ Disadv. Students</b>	<b>19.7</b>	<b>19.9</b>	<b>18.8</b>	<b>18.8</b>	<b>18.9</b>
	No. of Schools Reporting	1,425	1,451	1,527	1,543	1,570
	Total Enrolled Students	808,013	826,537	843,181	840,229	853,612
White Isolated	<b>% Econ Disadv. Students</b>	<b>10.7</b>	<b>11.5</b>	<b>10.0</b>	<b>9.6</b>	<b>9.1</b>
	No. of Schools Reporting	113	91	86	64	55
	Total Enrolled Students	52,311	43,391	32,261	26,041	21,571
Economically Segregated Only	<b>% Econ Disadv. Students</b>	<b>65.2</b>	<b>65.4</b>	<b>63.5</b>	<b>63.1</b>	<b>63.4</b>
	No. of Schools Reporting	337	321	309	298	283
	Total Enrolled Students	192,503	177,397	176,066	175,842	164,809
Racially Segregated	<b>% Econ Disadv. Students</b>	<b>31.1</b>	<b>24.3</b>	<b>27.5</b>	<b>30.2</b>	<b>25.4</b>
	No. of Schools Reporting	18	14	24	44	49
	Total Enrolled Students	10,216	8,243	12,142	22,920	26,479
Racially & Economically Segregated	<b>% Econ Disadv. Students</b>	<b>80.5</b>	<b>80.8</b>	<b>78.3</b>	<b>78.4</b>	<b>78.2</b>
	No. of Schools Reporting	364	383	423	407	409
	Total Enrolled Students	218,487	232,455	251,751	246,367	249,690

## Percentage English Learners by School Segregation - All Traditional Schools, 2015-2020

School Type		2015-2016	2016-2017	2017-2018	2018-2019	2019-2020
Mixed/Non-segregated	<b>% EL Students</b>	<b>3.5</b>	<b>3.7</b>	<b>3.0</b>	<b>3.1</b>	<b>3.3</b>
	No. of Schools Reporting	1,169	1,166	1,527	1,543	1,570
	Total Enrolled Students	699,535	696,900	843,181	840,229	853,612
White Isolated	<b>% EL Students</b>	<b>0.9</b>	<b>0.8</b>	<b>0.4</b>	<b>0.4</b>	<b>0.4</b>
	No. of Schools Reporting	57	47	86	64	55
	Total Enrolled Students	32,975	28,293	32,261	26,041	21,571
Economically Segregated Only	<b>% EL Students</b>	<b>8.5</b>	<b>9.3</b>	<b>8.3</b>	<b>9.2</b>	<b>9.7</b>
	No. of Schools Reporting	296	283	309	298	283
	Total Enrolled Students	179,510	165,006	176,066	175,842	164,809
Racially Segregated	<b>% EL Students</b>	<b>8.6</b>	<b>10.6</b>	<b>5.4</b>	<b>8.3</b>	<b>9.4</b>
	No. of Schools Reporting	15	11	24	44	49
	Total Enrolled Students	9,041	6,483	12,142	22,920	26,479
Racially & Economically Segregated	<b>% EL Students</b>	<b>16.8</b>	<b>16.8</b>	<b>16.6</b>	<b>17.9</b>	<b>19.2</b>
	No. of Schools Reporting	338	355	423	407	409
	Total Enrolled Students	211,277	224,620	251,751	246,367	249,690

## Chronic Student Absenteeism Rates by School Segregation - All Traditional Schools, 2015-2019

School Type	2015-2016	2016-2017	2017-2018	2018-2019
Mixed/Non-segregated	6.7	7.1	7.2	7.0
White Isolated	6.5	7.5	8.0	6.2
<b>Economically Segregated Only</b>	<b>11.4</b>	<b>11.7</b>	<b>12.4</b>	<b>12.2</b>
<b>Racially Segregated</b>	<b>14.1</b>	<b>6.0</b>	<b>21.1</b>	<b>18.3</b>
<b>Racially &amp; Economically Segregated</b>	<b>17.5</b>	<b>17.0</b>	<b>18.3</b>	<b>17.9</b>

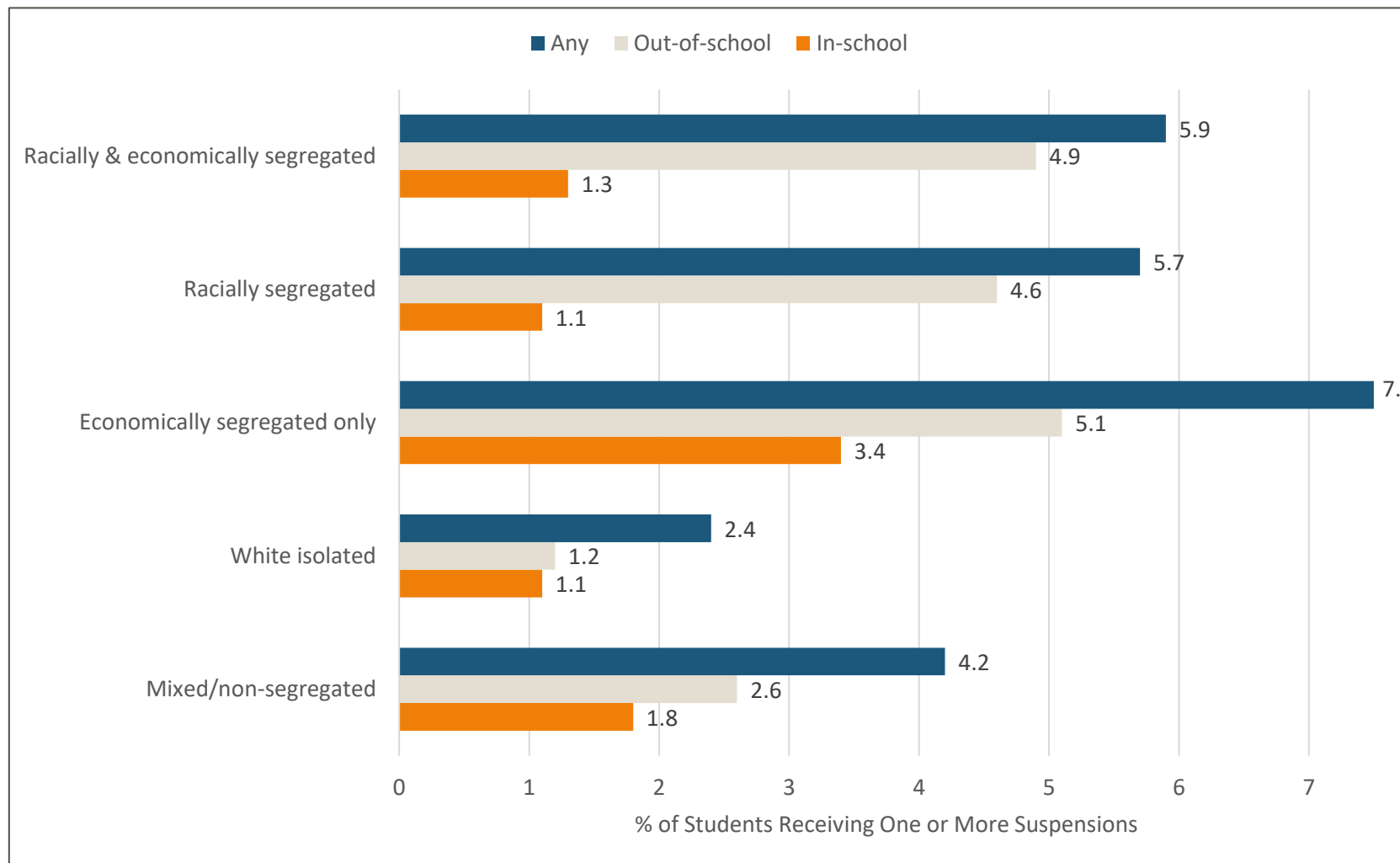
**Teacher Attendance Rates by School Segregation - All Traditional Schools, 2016-2019**

School Type	2016-2017	2017-2018	2018-2019
Mixed/Non-segregated	96.4	96.4	96.3
White Isolated	95.8	96.2	96.0
Economically Segregated Only	95.6	95.5	95.1
Racially Segregated	93.1	92.4	91.4
Racially & Economically Segregated	95.5	94.6	92.8

*Source: Calculations by the Cornwall Center based on NJDOE School Performance Reports.*

*(<https://rc.doe.state.nj.us/>). Because of pandemic disruptions, there were no attendance/absenteeism data for students or staff for 2019-2020.*

# Suspension Rates by Type and School Segregation - All Traditional Schools, 2018-2019



Source: Calculations based on data from New Jersey Department of Education School Performance Reports Database: <https://rc.doe.state.nj.us/download>. Because of pandemic disruptions, there were no attendance/absenteeism data for students or staff for 2019-2020.



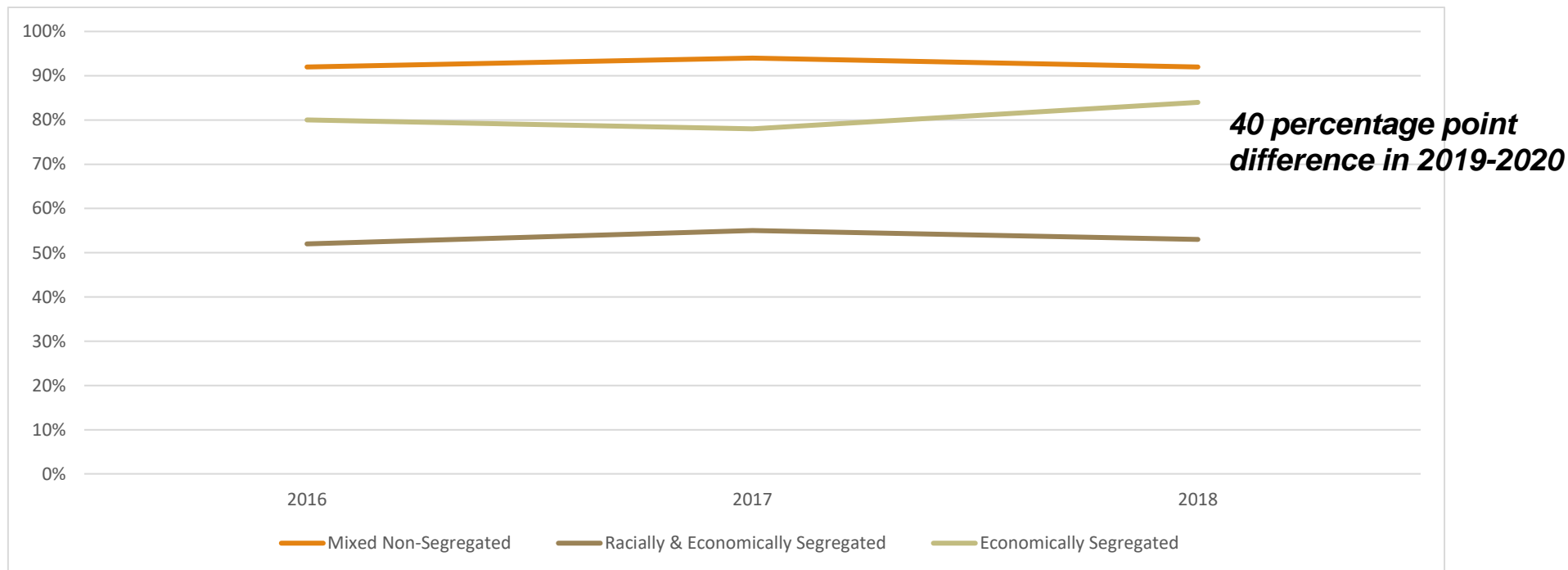
## Student-Counselor Ratio by School Segregation - All Traditional Schools , 2016-2020

School Type	2016-2017	2017-2018	2018-2019	2019-2020
Mixed/non-segregated	366.1	364.8	352.5	343.7
White Isolated	354.9	353.7	360.8	345.0
Economically Segregated Only	400.2	399.8	392.9	375.3
Racially Segregated Only	390.5	437.4	345.1	362.9
Racially & Economic Segregated	460.9	475.8	467.0	457.8

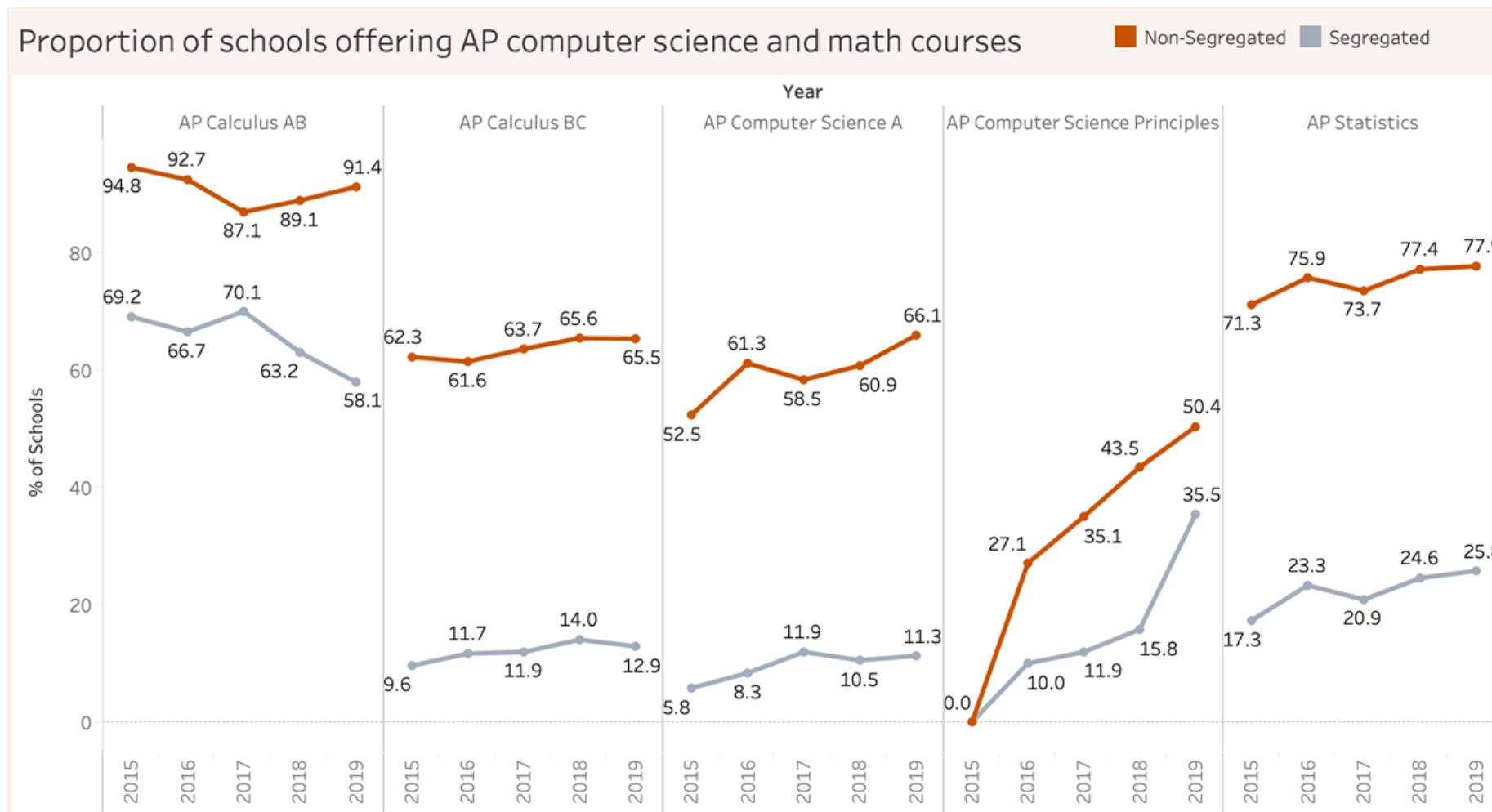
# ***CURRICULAR BREADTH***

## PERCENTAGE OF NJ MIDDLE SCHOOLS HAVING ENROLLMENT IN ALGEBRA I IN GRADES 6-8, BY SCHOOL SEGREGATION

**Access to Algebra I in 8<sup>th</sup> grade for students who may be academically ready to take advantage of the opportunity is not equitably distributed.**

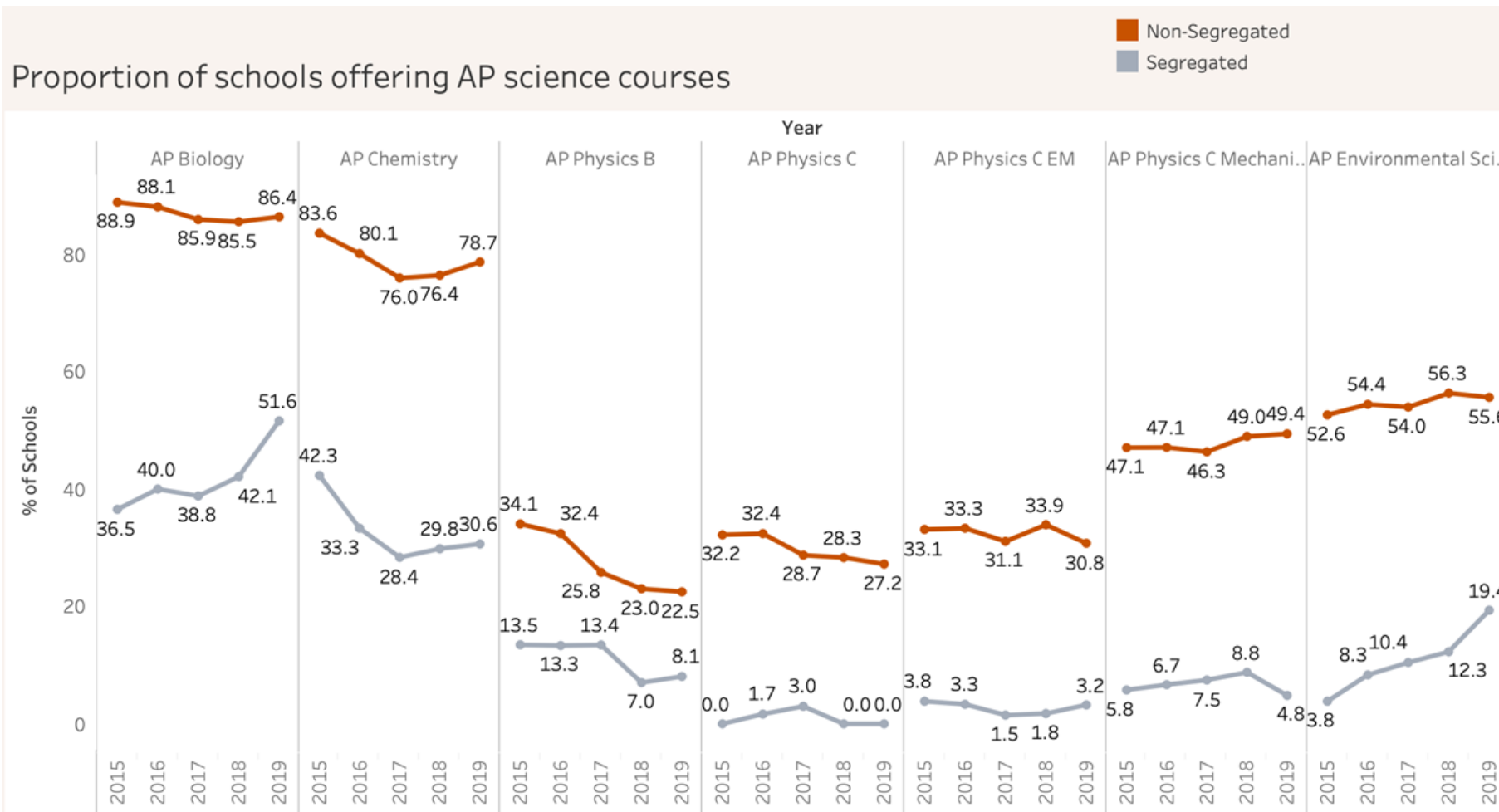


# PERCENTAGE OF SCHOOLS OFFERING AP MATH AND COMPUTER SCIENCE COURSES, 2015-2020



Source: Calculations based on data from New Jersey Department of Education School Performance Reports Database: <https://rc.doe.state.nj.us/download>.

# PERCENTAGE OF SCHOOLS OFFERING AP SCIENCE COURSES, 2015-2020



Source: Calculations based on data from New Jersey Department of Education School Performance Reports Database: <https://rc.doe.state.nj.us/download>.

## PERCENTAGE OF 11TH AND 12TH GRADERS ENROLLING AND TAKING EXAMS IN ONE OR MORE AP OR IB COURSE BY SCHOOL SEGREGATION, 2019-2020

Enrolling in Courses	
School Type	2019-2020
Mixed/non-segregated	41.7
Economically segregated only	25.0
Racially & economically segregated	21.7

Taking Exams	
School Type	2019-2020
Mixed/non-segregated	33.1
Economically segregated only	18.3
Racially & economically segregated	15.4

Earning College-Recognized Scores	
School Type	2019-2020
Mixed/non-segregated	31.5
Economically segregated only	15.6
Racially & economically segregated	17.6

*Between mixed and racially & economically segregated schools:*

**20.0  
percentage  
point gap**

**17.7  
percentage  
point gap**

**13.9  
percentage  
point gap**

**PERCENTAGE OF 11TH AND 12TH GRADERS ENROLLING IN ONE OR MORE DUAL ENROLLMENT COURSE BY SCHOOL SEGREGATION, 2017-2020**

<b>School Type</b>	<b>2017-2018</b>	<b>2018-2019</b>	<b>2019-2020</b>
<b>Mixed/non-segregated</b>	19.0	24.7	<b>25.6</b>
<b>Economically segregated only</b>	9.1	12.2	<b>13.4</b>
<b>Racially &amp; economically segregated</b>	2.3	9.3	<b>11.2</b>

# Student Academic Performance by School Segregation - All Traditional Schools, 2016-2019

School Type	MATH			ELA		
	% at or above proficiency			% at or above proficiency		
	2016-2017	2017-2018	2018-2019	2016-2017	2017-2018	2018-2019
Mixed/non-segregated	53.9	56.3	56.3	63.4	65.5	65.8
White Isolated	55.4	58.7	62.9	66.7	67.9	70.7
Economically Segregated Only	33.3	34.9	34.6	43.1	45.2	45.7
Racially Segregated Only	64.4	63.8	48.4	69.3	56.1	49.5
Racially & Economically Segregated	26.7	27.9	27.2	32.7	35.5	35.8

Source: Calculations based on data from New Jersey Department of Education School Performance Reports Database:

<https://rc.doe.state.nj.us/download>.



**To REPEAT:**

Leaving students in segregated school environments means leaving them in schools more likely characterized by weak, if not harsh, social bonds, limited learning opportunities, especially for high-level learning, and fewer human resources.

## Appendix 2.1. Districts where Latinx students have ELA proficiency above or just below the state average of 49%, 2021–2022

County	District	District Need Category	Latinx ELA Proficiency Rate (%)
Hudson	Hudson County Schools of Technology School District	Moderate Need	76.9
Bergen	Moonachie School District	Moderate Need	75.0
Bergen	South Hackensack School District	Moderate Need	72.9
Bergen	Lodi School District	Moderate Need	70.9
Passaic	Passaic County Technical-Vocational School District	Moderate Need	64.0
Monmouth	Eatontown Public School District	Moderate Need	63.7
Essex	Essex County Schools of Technology	High Need	62.1
Morris	Dover Public School District	High Need	60.6
Mercer	Area Vocational Technical School District of Mercer County	Moderate Need	59.5
Bergen	Teaneck School District	Moderate Need	56.8
Bergen	Little Ferry Public School District	Moderate Need	55.9
Union	Township of Union School District	Moderate Need	55.1
Bergen	Ridgefield School District	Moderate Need	55.0
Hudson	Union City School District	Highest Need	54.4
Hudson	East Newark School District	High Need	54.1
Union	Elizabeth Public Schools	High Need	53.5
Burlington	New Hanover Township	Moderate Need	52.6
Hudson	Guttenberg School District	High Need	52.4
Bergen	Ridgefield Park Public School District	Moderate Need	52.2
Bergen	East Rutherford School District	Moderate Need	52.2
Middlesex	Dunellen Public School District	Moderate Need	51.2
Hudson	Harrison Public Schools	High Need	51.1
Middlesex	Middlesex Borough School District	Moderate Need	50.5
Bergen	Elmwood Park School District	Moderate Need	50.5
Essex	West Orange Public Schools	Moderate Need	50.3
Morris	Netcong School District	Moderate Need	50.0
Passaic	Haledon Public School District	Moderate Need	49.4
Middlesex	Sayreville School District	Moderate Need	48.7
Union	Roselle Park Public School District	Moderate Need	48.6
Bergen	Edgewater School District	Moderate Need	48.3
Middlesex	Middlesex County Vocational and Technical School District	Moderate Need	47.9
Middlesex	Piscataway Township School District	Moderate Need	47.5
Morris	Wharton Borough School District	Moderate Need	47.1
Bergen	Wallington Boro School District	Moderate Need	46.7
Bergen	Hackensack School District	High Need	46.5
Hudson	North Bergen School District	High Need	46.5

## Appendix 2.2. Districts where Latinx students have math proficiency above or just below the state average of 36%, 2021–2022

County	District	District Need Category	Latinx Math Proficiency Rate (%)
Bergen	Moonachie School District	Moderate Need	51.0
Bergen	South Hackensack School District	Moderate Need	49.1
Monmouth	Eatontown Public School District	Moderate Need	45.7
Bergen	Lodi School District	Moderate Need	45.3
Camden	Camden Prep, Inc.	High Need	42.9
Bergen	Teaneck School District	Moderate Need	42.7
Morris	Dover Public School District	High Need	42.0
Middlesex	Middlesex Borough School District	Moderate Need	42.0
Bergen	East Rutherford School District	Moderate Need	41.7
Union	Roselle Park Public School District	Moderate Need	40.4
Passaic	Passaic County Technical-Vocational School District	Moderate Need	40.1
Somerset	South Bound Brook Public School District	Moderate Need	40.0
Middlesex	Jamesburg Public School District	High Need	39.4
Union	Township of Union School District	Moderate Need	39.2
Hudson	Guttenberg School District	High Need	38.3
Monmouth	Freehold Borough School District	High Need	37.1
Bergen	Ridgefield School District	Moderate Need	36.9
Burlington	New Hanover Township	Moderate Need	36.8
Essex	West Orange Public Schools	Moderate Need	34.4
Monmouth	Red Bank Borough Public School District	Highest Need	34.3
Atlantic	Galloway Township Public School District	Moderate Need	34.2
Hudson	Union City School District	Highest Need	34.1
Burlington	Edgewater Park Township School District	High Need	33.8